



**Cadet Close, Coventry, CV3 1PR**

**SHELDON  
BOSLEY  
KNIGHT**

LAND AND  
PROPERTY  
PROFESSIONALS



# Property Description

Sheldon Bosley Knight are proud to welcome to the market this one bedroom, ground floor apartment situated in the popular New Stoke Village. The property is ideal for a first time buyer or investor, is offered for sale with no onward chain and benefits from its close proximity to the City Centre, local shops, amenities and road links.

The property comprises an entrance hallway with large storage cupboard, a generous double bedroom with built in storage cupboard, open plan living which combines the lounge, having a bay patio door opening to the outside, dining area and fitted kitchen and a family bathroom with bath and over shower.

Further benefits include intercom entrance, an allocated parking space, gas central heating, double glazing and a long lease.

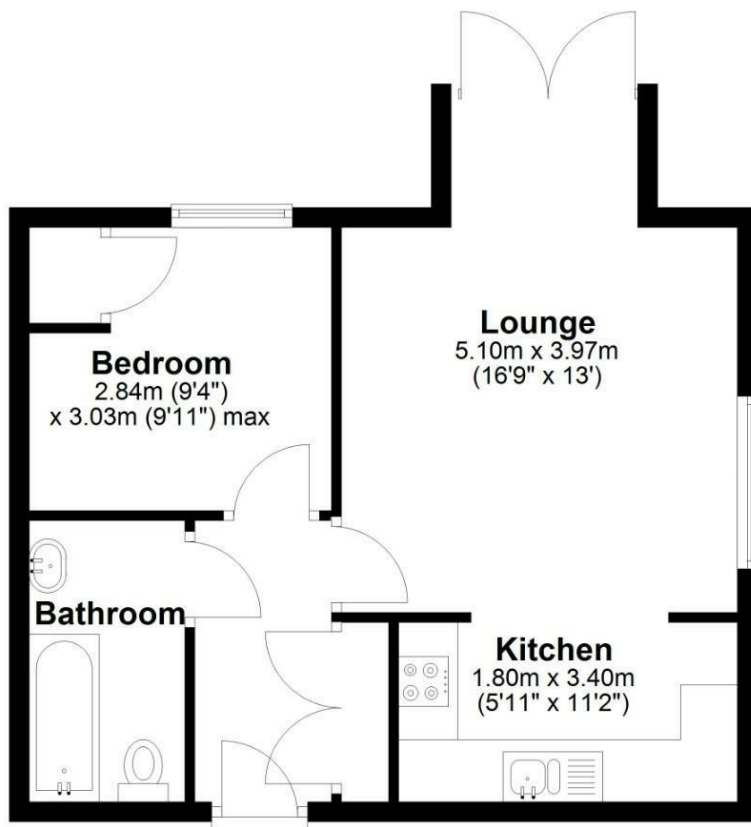






## Ground Floor

Approx. 48.1 sq. metres (518.1 sq. feet)



Total area: approx. 48.1 sq. metres (518.1 sq. feet)

## Key Features

- Ground Floor Apartment
- One Double Bedroom
- Double glazed and gas central heating
- Patio doors opening out from the lounge
- Modern and Well Presented
- Allocated Parking space
- Convenient location and close to town
- Offered with no upward chain
- Call now to arrange a viewing
- EPC - C

**£115,000**

EPC Rating - C

Tenure - Leasehold

Council Tax Band - A

Local Authority -  
Coventry City Council

### DISCLAIMER

All fixtures and fittings mentioned in these particulars are included in the sale, all others in the property are specifically excluded. Photographs are reproduced for general information and it must not be inferred that any item is included for sale with the property. These particulars are thought to be materially correct. Their accuracy is not guaranteed and they do not form part of any contract.

We routinely refer clients to both our recommended Legal Firm and a panel of Financial Services Providers. It is your decision whether you choose to deal with these companies. In making that decision, you should know that we receive a referral fee